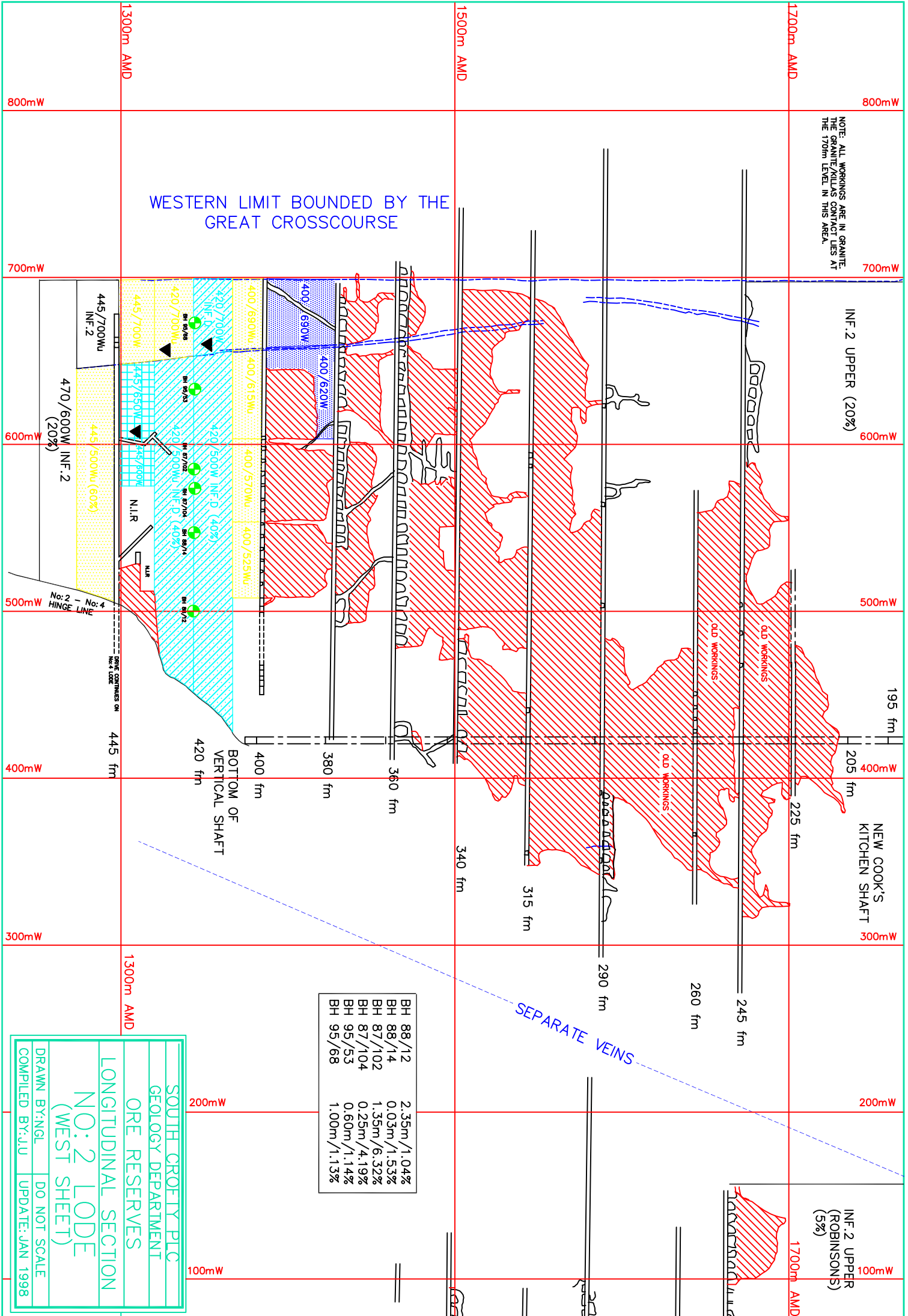


NOTE: ALL WORKINGS ARE IN GRANITE. THE GRANITE/KILLAS CONTACT LIES AT THE 1700m LEVEL IN THIS AREA.

WESTERN LIMIT BOUNDED BY THE GREAT CROSSCOURSE

SEPARATE VEINS



BH 88/12	2.35m/1.04%
BH 88/14	0.03m/1.53%
BH 87/102	1.35m/6.32%
BH 87/104	0.25m/4.19%
BH 95/53	0.60m/1.14%
BH 95/68	1.00m/1.13%

SOUTH CROFTY PLC
GEOLOGY DEPARTMENT
ORE RESERVES

LONGITUDINAL SECTION
NO: 2 LODE
(WEST SHEET)

DRAWN BY: NGL DO NOT SCALE
COMPILED BY: J.U UPDATE: JAN 1998